

Gem 550

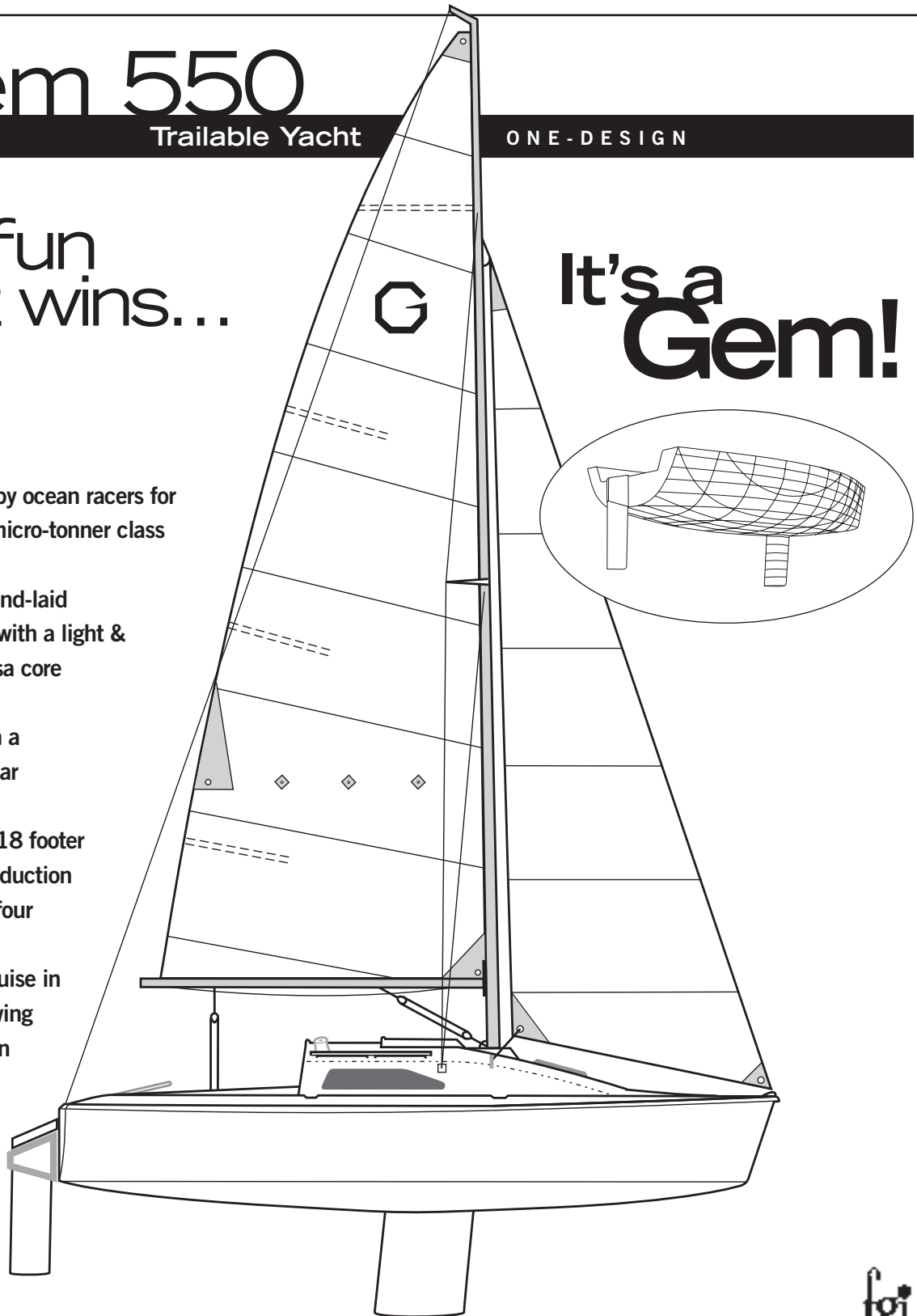
Trailable Yacht

ONE-DESIGN

It's fun
It wins...

It's a
Gem!

- Designed by ocean racers for Europe's micro-tonner class
- Built in hand-laid fibreglass with a light & strong balsa core
- Tow it with a standard car
- Roomiest 18 footer now in production — sleeps four
- Race or cruise in a fast-growing One-Design class



What are the Gem's statistics?



Dimension	Imperial	Metric	Dimension	Imperial	Metric
LOA	18ft	5.50m	Ballast	396lb	180kg
LWL	16ft 8in	5.08m	Sail Area	199 sq ft	18.5 sqm
Beam	7ft 11in	2.41m	Mainsail	108 sq ft	10 sqm
Draft <i>keel down</i>	3ft 3in	1.00m	Genoa	91 sq ft	8.45 sqm
	<i>keel up</i>	9in	0.23m	Jib	60 sq ft
Displacement	1144lbs	520kg	Spinnaker	250 sq ft	23 sqm

Gem 550

Trailable Yacht

ONE-DESIGN

What is a Gem 550?

The GEM 550 Trailable Yacht was designed to meet the need for a reasonably priced racing-oriented family weekender, and to provide race performance at a level that falls midway between the popular dinghy classes and the smallest offshore racing yachts.

The GEM 550 is a successful UK Rob Humphreys One-Design Micro Tonner yacht that has found a new life in Australia as a popular Trailer Sailer in several States and ACT in the past few years. It's an in-demand yacht with solid resale values.

Its hull lines are similar to the latest go-fast ocean racers — with plumb bow, extreme beam at 2.41m (almost 8 feet) for its overall 5.5m (18 feet) length, a wide, dished-like belly and flat after section, with unobtrusive sleek upper cabin lines. The drop dagger steel keel gives it keelboat performance.

Australian research shows that TS purchasers are attracted by this modern 'racy' appearance — and are amazed to find the design is over 20 years old. It is a proven design, but it costs much less than currently trendy sports boats with a similar style.

Port Adelaide professional boat builder John Stockton, of *Central Boating Services*, sailed the GEM in the UK in the 80's and later took charge of the master moulds for production in Australia. He has met the designer and stays in contact for updates.

What does a Gem 550 cost?

Standard Yacht

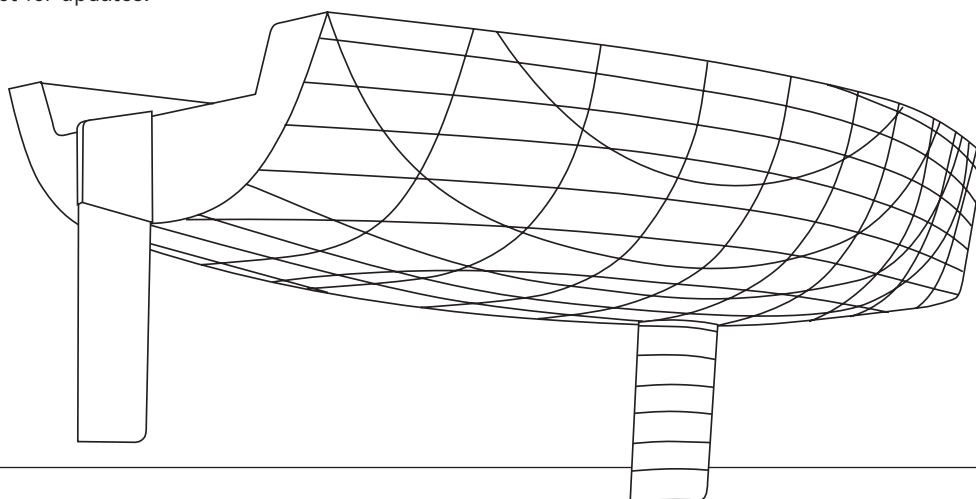
\$18,950⁰⁰ (Ex Port Adelaide)

Including:

- Complete fibreglass yacht and interior
- Keel and rudder installed
- Oak wood trim, hand rails and tiller
- Outboard mount pad and brace
- Harken winches and handle
- Spun-tapered rig, all halyards led aft to cockpit
- 10:1 clutch winch for keel lift
- Galley Unit

Extras

- Mainsail and jib \$1400⁰⁰
- Spinnaker with all fittings and pole \$1,360⁰⁰
- Genoa, mylar with fittings \$850⁰⁰
- Custom built, galvanised low-ride trailer \$1,800⁰⁰ with brakes add \$680⁰⁰
- Safety fence (pulpit etc) \$985⁰⁰ fitted
- Outboard motor: *Johnson 4-6HP recommended*
- Standard Terms for ordering:
One third of final quote with order; one third when moulding complete; balance when ready.



View the Boat under construction... on the Gem 550 Association Cyber Port

www.netspeed.com.au/nielsen/

Central Boating Services

Builders of the Gem 550 Trailable Yacht • General Marine Repairs & Sales

10 Jenkins St, Birkenhead, Port Adelaide, South Australia Phone / Fax (08) 8242 0066 Email gemyachts@bigpond.com

Agents for NSW and Qld: **Sailaway Yachts** Telephone (02) 4945 9499